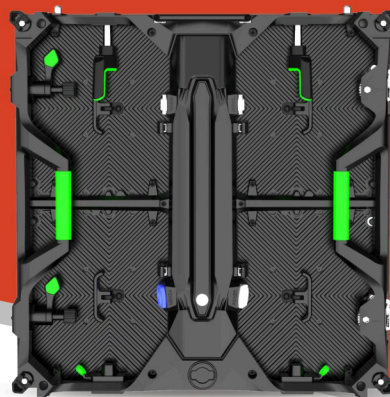




500mmx1000mm

INDOOR AND
OUTDOOR RENTAL
APPLICATION



500mmx500mm

RD SERIES



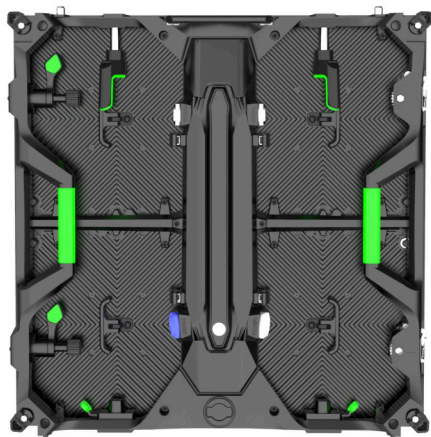
RD SERIES

RD series is a high definition curve-able LED display designed for the high demands for rental market. Each cabinet has unique protection for all four corners, providing maximum protection for module edges.

Indoor: P1.9/2.5/2.8/3.9

Outdoor: P3.9/4.8

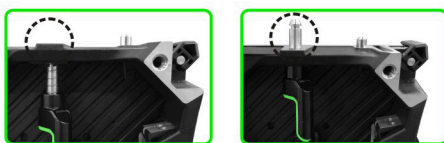
Super light & thin



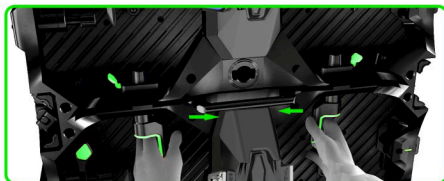
GOB for your choice

Cabinet size: 500mmx500mm, only 8.6Kg each panel
500mmx1000mm, only 16Kg each panel

Easy and fast installation



Vertical lock for high precision and fast installation



Installation



Detachment

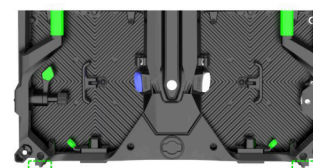
Vertical lock can be automatically locked when two cabinets combine, one person can finish installation

Unique protection for all four corners

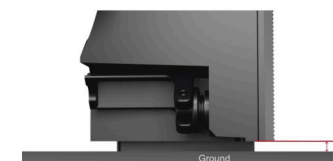


Maximum protection for module edges

Bottom gap design

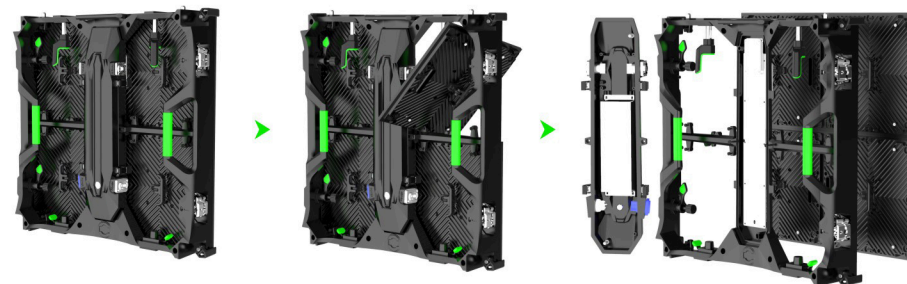


Side view



Bottom modules are above the floor and therefore cannot be damaged

Easy maintenance



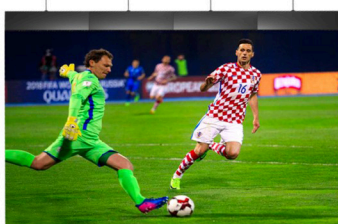
Modular design, easy pin connection, independent power box

Curved lock system

Unique curve connection design, support concave and convex connection.



Hanging application



Back view

Stack assembly with ground support system

Maximized utilization: multifunctional pedestal can be used as hanging bar.



Step 1



Step 2



Step 3



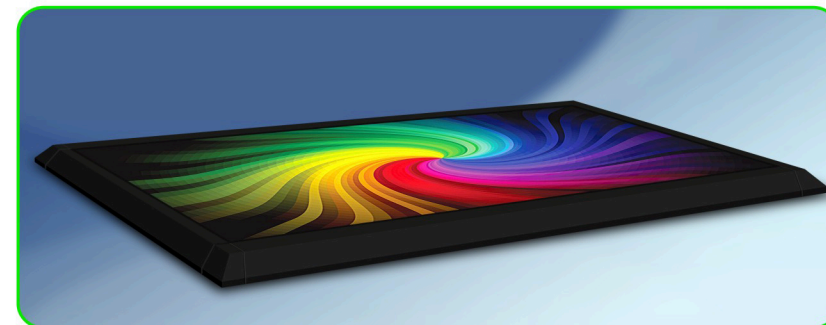
Step 4



Installation steps

Floor tile application

First splice the cabinets together by one column, the spread each row together onto the floor.



Specifications

Part Number	RD1.9/2.5	RD2/3	RD(O)3	RD(O)4
Pixel pitch	1.9/2.5mm	2.8/3.9mm	3.9mm	4.8mm
LED type	SMD1515(Black)	SMD2020(Black)	SMD1921(Black)	SMD1921(White)
Pixel configuration	1R1G1B	1R1G1B	1R1G1B	1R1G1B
Size of module	250mmx250mm	250mmx250mm	250mmx250mm	250mmx250mm
Resolution of module	128x128/100x100	88x88/64x64	64x64	52x52
Density(dots/m ²)	262144/160000	123904/65536	65536	43264
Size of cabinet (mm)	500x500	500x500,500x1000	500x500,500x1000	500x500,500x1000
Cabinet material	Die-casting	Die-casting	Die-casting	Die-casting
Weight of cabinet	8.6KG	8.6KG,16KG	8.6KG,16KG	8.6KG,16KG
Support hanging or not	Yes	Yes	Yes	Yes
Max power consumption	600W/M ²	600W/M ²	750W/M ²	750W/M ²
Average power consumption	200W/M ²	200W/M ²	250W/M ²	250W/M ²
Colors	16.7M	16.7M	16.7M	16.7M
Gray scale	16bits	16bits	14bits	14bits
Color temperature	3000-10000K	3000-10000K	3000-10000K	3000-10000K
Driving method	1/32, 1/25	1/22, 1/16	1/8	1/9
Refresh frequency	≥3000Hz	≥3000Hz	≥1920Hz	≥1920Hz
Brightness	800cd/m ²	900cd/m ²	3500/4500cd/m ²	5000cd/m ²
Brightness control	256 grade	256 grade	256 grade	256 grade
IP grade	IP30	IP30	IP65	IP65